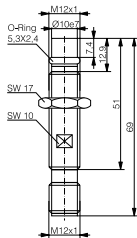
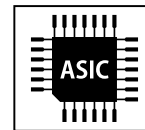
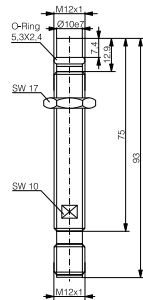


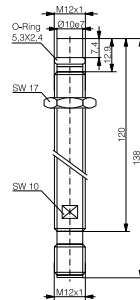
HOUSING	OPERATING DISTANCE	MOUNTING	✓ Resistant up to 500 bar	✓ Peaks ≤ 1000 bar
M12	1.5 mm	Embeddable	✓ Exceptionally long life	✓ Ceramic sensing face
			✓ Long operating distance	✓ Gas tight, IP68
			✓ Large temperature range	✓ IO-Link v1.1



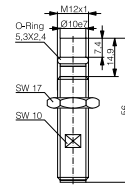
DW-AS-50x-P12



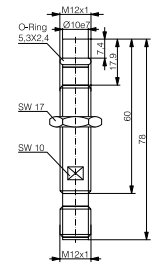
DW-AS-50x-P12-621



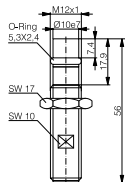
DW-AS-50x-P12-622



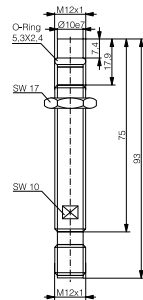
DW-AS-50x-P12-624



DW-AS-50x-P12-627



DW-AS-50x-P12-630



DW-AS-50x-P12-635

DETECTION DATA		INTERFACE	
Rated operating distance (S _n)	1.5 mm	Indicator LED, yellow	✗
Assured operating distance (S _a)	≤ (0.81 x S _n) mm (-25 ... +70 °C)	Indicator LED, yellow, blinking	✗
Repeat accuracy	≤ 0.1 mm	IO-Link	✓
Hysteresis	3% S _n ≤ Hyst ≤ 15% S _n	MTTF (@40°C)	949 y
Temperature drift	≤ 10 % (-25 ... +70°C) ≤ 15 % (+70 ... +100°C)		
Standard target	10 x 10 x 1mm ³ , FE360		

Note: 0.9S_n ≤ S_a ≤ 1.1S_n

ELECTRICAL DATA		MECHANICAL DATA	
Supply voltage range (U_B)	10...30 VDC	Operating pressure	≤ 500 bar
Residual ripple	≤ 20% U_B	Peak pressure	≤ 1000 bar
Output current	≤ 200 mA	Vacuum down to	10 ⁻⁸ Torr
Output voltage drop	≤ 2.0 VDC	Mounting	Embeddable
Power consumption (no-load)	≤ 10 mA	Housing material	Stainless-steel DIN 1.4305 / AISI 303
Residual current	≤ 0.1 mA	Sensing face material	ZrO ²
Switching frequency	≤ 600 Hz	Max tightening torque	40 Nm
Short-circuit protection	✓	Ambient operating temperature	-25...+100°C ¹
Voltage reversal protection	✓	Enclosure rating	IP 68
Cable length max.	≤ 300 m	Weight (cable / connector)	see page 3
		Shock and vibration	IEC 60947-5-2 / 7.4

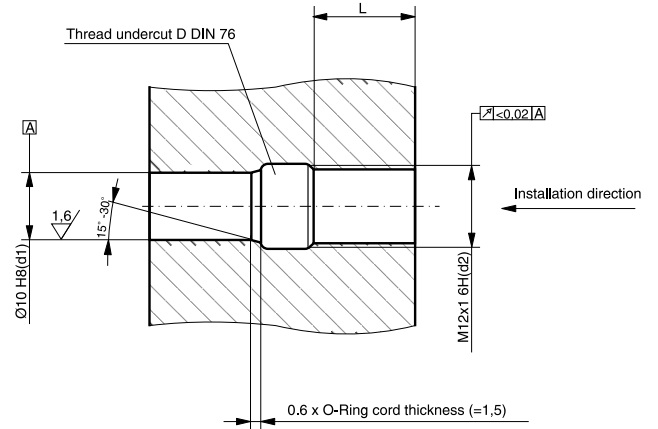
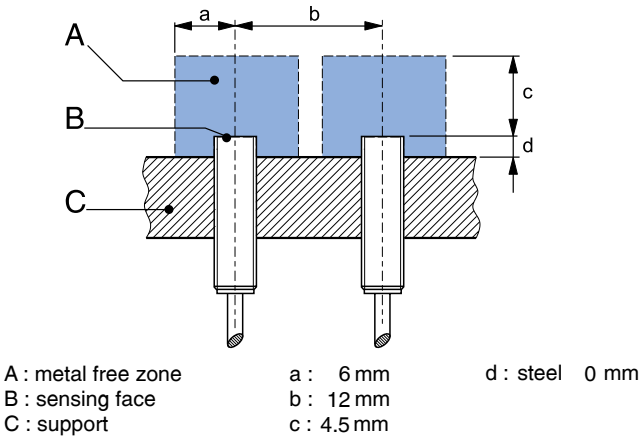
¹Maximum temperature according to UL: 70°C.

Note: all data measured according to IEC 60947-5-2 standard with $U_B=20 \dots 30VDC$, $T_A=23°C \pm 5°C$.

CORRECTION FACTORS									
Steel FE 360	1	Copper	0.12	Aluminum	0.2	Brass	0.34	Stainless S. V2A 1 / 2 mm	0.75

Note: the operating distance of the sensor must be multiplied by the correction factor of the material. For example, the operating distance on Aluminum is $S_{n,Al} = S_n \times CF_{Al}$. In case of embeddable mounting, the distance is multiplied by the additional correction factor of the support, thus $S_{n,Al} = S_n \times CF_{Al} \times CF_{emb,Al}$.

INSTALLATION CONDITIONS



Note: additional installation information can be found in the glossary of the Contrinex General Catalog.

L: recommended installation depth: $L \geq 0.8 \times d2$

IO-LINK FUNCTIONALITIES

IO-Link version	1.1
SIO mode	Supported
Process data	7-bit input
Baudrate	COM2 (38.4 kBaud)
Minimum cycle time	10.4 ms
ISDU	Not supported



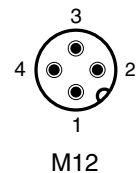
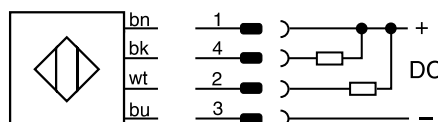
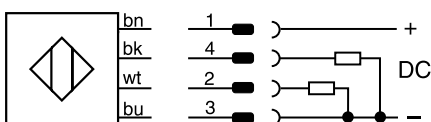
IO-Link files may be downloaded from

www.contrinex.com/product-range/inductive-sensors/.

Select the product name to display the product page with corresponding downloads.

Alternatively, just click/scan the QR code on the left.

WIRING DIAGRAM PIN ASSIGNMENT



AVAILABLE TYPES

Part number	Part reference	Polarity	Connection	Output on pin 2	Output on pin 4	Weight
330-020-187	DW-AS-50A-P12	PNP	M12 4-pin	Normally close (NC)	Normally open (NO) / IO-Link	31 g
330-020-188	DW-AS-50A-P12-621	PNP	M12 4-pin	Normally close (NC)	Normally open (NO) / IO-Link	42 g
330-020-189	DW-AS-50A-P12-622	PNP	M12 4-pin	Normally close (NC)	Normally open (NO) / IO-Link	50 g
330-020-190	DW-AS-50A-P12-624	PNP	M12 4-pin	Normally close (NC)	Normally open (NO) / IO-Link	27 g
330-020-191	DW-AS-50A-P12-627	PNP	M12 4-pin	Normally close (NC)	Normally open (NO) / IO-Link	35 g
330-020-192	DW-AS-50A-P12-630	PNP	M12 4-pin	Normally close (NC)	Normally open (NO) / IO-Link	27 g
330-020-193	DW-AS-50A-P12-635	PNP	M12 4-pin	Normally close (NC)	Normally open (NO) / IO-Link	42 g
330-020-222	DW-AS-50B-P12	NPN	M12 4-pin	Normally close (NC)	Normally open (NO)	31 g
330-020-223	DW-AS-50B-P12-621	NPN	M12 4-pin	Normally close (NC)	Normally open (NO)	42 g
330-020-224	DW-AS-50B-P12-622	NPN	M12 4-pin	Normally close (NC)	Normally open (NO)	50 g
330-020-225	DW-AS-50B-P12-624	NPN	M12 4-pin	Normally close (NC)	Normally open (NO)	27 g
330-020-226	DW-AS-50B-P12-627	NPN	M12 4-pin	Normally close (NC)	Normally open (NO)	35 g
330-020-227	DW-AS-50B-P12-630	NPN	M12 4-pin	Normally close (NC)	Normally open (NO)	27 g
330-020-228	DW-AS-50B-P12-635	NPN	M12 4-pin	Normally close (NC)	Normally open (NO)	42 g

Note: part reference may include additional suffix to indicate a revision version or special version. Further information is available on request.

Operators of the products we supply are responsible for compliance with measures for the protection of persons. The use of our equipment in applications where the safety of persons might be at risk is only authorized if the operator observes and implements separate, appropriate and necessary measures for the protection of persons and machines. Terms of delivery and rights to change design reserved.