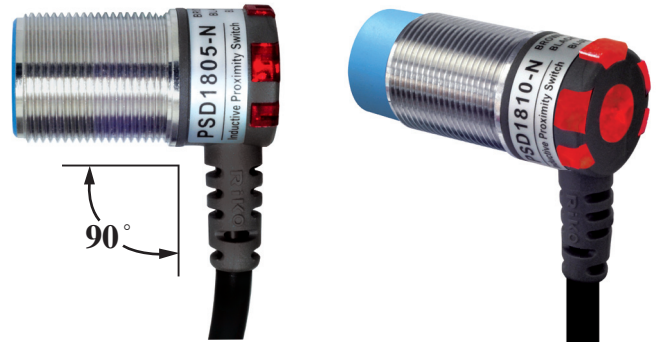


Tubular Inductive Proximity Sensor

M18

◆ Characteristic / 特點 :

- 90 degree wiring, saving space.
/ 專利90度出線設計，節省空間。
- Large LED indicator, clearly checking working operation.
/ 大面積動作燈，可清晰了解感測器的動作。
- IP 67 protection rating./ IP67防水等級。
- NP model : NPN+PNP NO/NC 4-in-1 outputs.
/ 新型NP電路：NPN/PNP NO/NC All in one.
- Anti-bending connection design.
/ 專利包覆設計，耐彎保護佳。

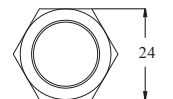
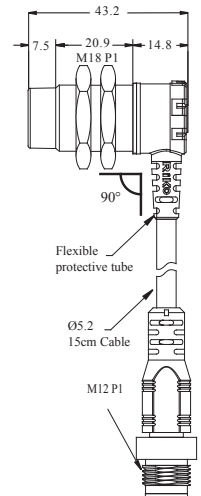
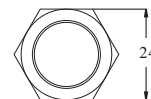
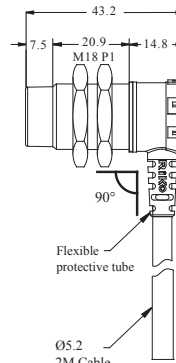
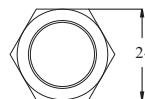
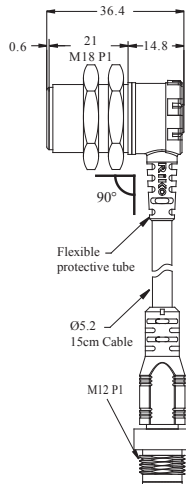
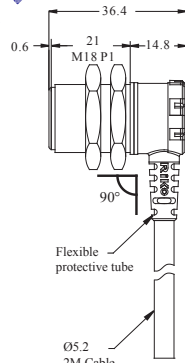
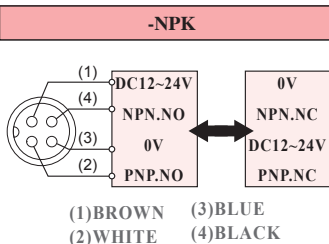
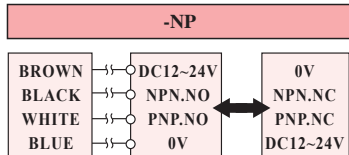


◆ Specifications / 規格表 :

Output method / 輸出模式	NPN N.O.	PSD1805-N	PSD1805-NK	PSD1810-N	PSD1810-NK
	PNP N.O.	PSD1805-P	PSD1805-PK	PSD1810-P	PSD1810-PK
	NPN N.O./N.C. PNP N.O./N.C.	PSD1805-NP	PSD1805-NPK	PSD1808-NP	PSD1808-NPK
	2 WIRES N.O.	-	-	-	-
	2 WIRES N.C.	-	-	-	-
Sensing distance / 檢出距離	5 mm / 5 mm			9 mm / 8 mm	
Secure sensing distance / 建議距離	0 to 4.0 mm / 0 to 4.0 mm			0 to 7.2 mm / 0 to 6.4 mm	
Standard sensing object / 標準檢測物	Iron 18×18×1 mm				
Sensing type / 檢出方式	Shielded / 隔離型			Unshielded / 非隔離型	
Description / 外型	Standard M18 / 標準M18				
Hysteresis / 遲滯	≤ 10 % of sensing distance				
Response time / 反應時間	2 ms Max.				
Operating voltage / 工作電壓	DC 12 ~ 24 V				
Current consumption / 消耗電流	≤ 14 mA no-load				
Load current / 負載電流	100 mA Max. at DC 24V				
Leakage current / 漏電流	≤ 1.1 mA no-load				
Residual voltage / 殘餘電壓	≤ DC 2V				
Insulation resistance / 隔離阻抗	20MΩ min. (DC500V)				
Voltage withstandability / 絕緣耐壓	AC1000V 60Hz for 60 Sec.				
Operating temperature / 工作溫度	-20°C ~ +60°C				
Protection degree / 防水等級	IP 67				
Wiring method / 出線方式	N/P: Ø5.2x2M/3-wires NP: Ø5.2x2M /4-wires	M12 pigtailed type / M12接頭15cm電線式	N/P: Ø5.2x2M/3-wires NP: Ø5.2x2M /4-wires	M12 pigtailed type / M12接頭15cm電線式	
Weight / 重量	Approx.86g	Approx.38g	Approx.86g	Ap prox.38g	

◆ Dimensions / 尺寸圖 : (unit:mm)

◆ Wiring diagrams / 接線圖 :



Inductive / Capacitive Proximity Sensor

PSD18-LA/LV
PSC18-LA/LV
SC18-LA/LV

HPD
HPS

Ø4
M5
Ø6
M8
M12
M18
M30

JN
JND
KND
PN
PND
RN
SN
TSN

SID
SIR
SIA

PKC
KC
KCM
KCP

◆ Characteristic / 特點 :

- Special line-out design for bending resistance and tensile.it will upgrade the durability and life.
/ 獨特的出線包覆設計，抗拉、耐彎曲，提升耐用度和壽命。
- The IP67 rating is designed to the effective waterproof.
/ 保護結構達到IP67的規格，能有效的防水。
- NP model : NPN+PNP NO/NC 4-in-1 outputs.
/ 新型NP電路：NPN/PNP NO/NC All in one.

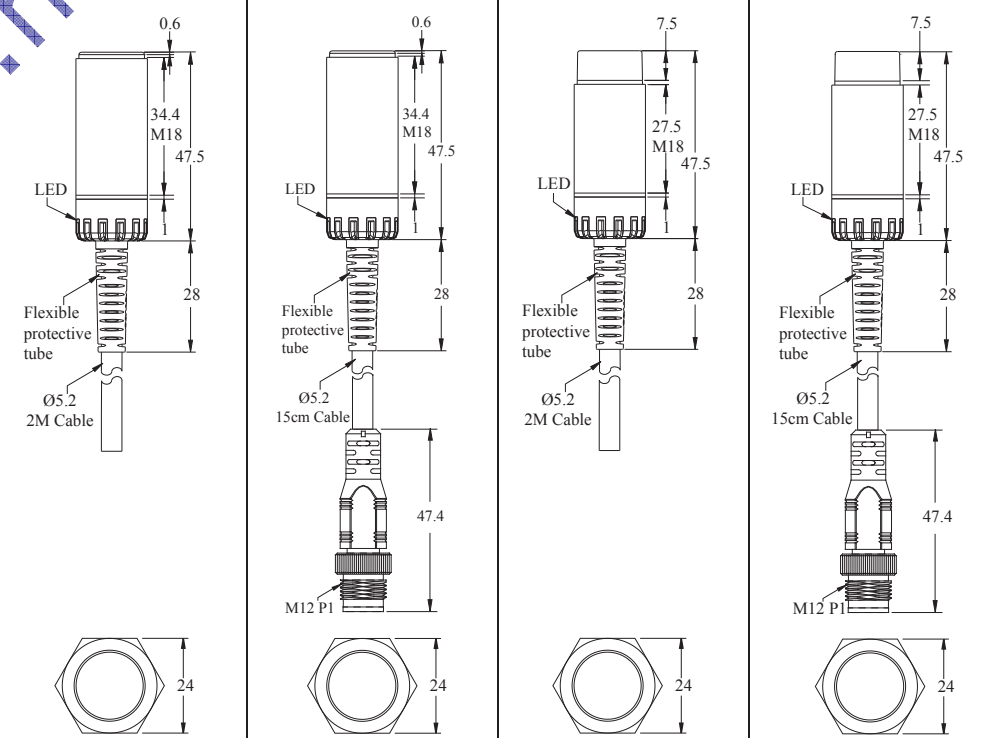
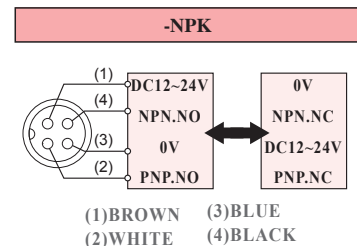
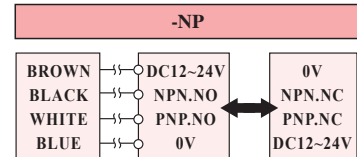


◆ Specifications / 規格表 :

Output method / 輸出模式	NPN N.O.	PSC1806-N	PSC1806-NK	PSC1812-N	PSC1812-NK
	PNP N.O.	PSC1806-P	PSC1806-PK	PSC1812-P	PSC1812-PK
	NPN N.O./N.C. PNP N.O./N.C.	PSC1805-NP	PSC1805-NPK	PSC1808-NP	PSC1808-NPK
	2 WIRES N.O.	-	-	-	-
	2 WIRES N.C.	-	-	-	-
Sensing distance / 檢出距離	6 mm / 5 mm			12 mm / 8 mm	
Secure sensing distance / 建議距離	0 to 4.8 mm / 0 to 4.0 mm			0 to 9.6 mm / 0 to 6.4 mm	
Standard sensing object / 標準檢測物	Iron 18x 18 x 1 mm				
Sensing type / 檢出方式	Shielded / 隔離型			Unshielded / 非隔離	
Description / 外型	Standard M18 / 標準M18				
Hysteresis / 遲滯	≤ 10 % of sensing distance				
Response time / 反應時間	2 ms Max.				
Operating voltage / 工作電壓	DC 2 ~ 24 V				
Current consumption / 消耗電流	≤ 14 mA no-load				
Load current / 負載電流	100 mA Max. at DC 24V				
Leakage current / 漏電流	≤ 1.1 mA no-load				
Residual voltage / 殘餘電壓	≤ DC 2V				
Insulation resistance / 隔離阻抗	20MΩ min. (DC500V)				
Voltage withstandability / 絕緣耐壓	AC1000V 60Hz for 60 Sec.				
Operating temperature / 工作溫度	-20°C ~ + 60°C				
Protection degree / 防水等級	IP 67				
Wiring method / 出線方式	N/P:Ø5.2x2M/3-wires NP:Ø5.2x2M/4-wires	M12 pigtailed type / M12接頭15cm電線式	N/P:Ø5.2x2M/3-wires NP:Ø5.2x2M/4-wires	M12 pigtailed type / M12接頭15cm電線式	
Weight / 重量	Approx.93g	Approx.40.5g	Approx.92g	Ap prox.39.5g	

◆ Dimensions / 尺寸圖 : (unit:mm)

◆ Wiring diagrams / 接線圖 :



Tubular Inductive Proximity Sensor

M18

◆ Characteristic / 特點 :

- Standard models for metal detection.
/ 標準型含鐵金屬檢測有無。
- Assorted variety : Short body/ Long body/
AC or DC available.
/ 廣泛的選擇性，短本體、長本體、直流、交流型皆具備。

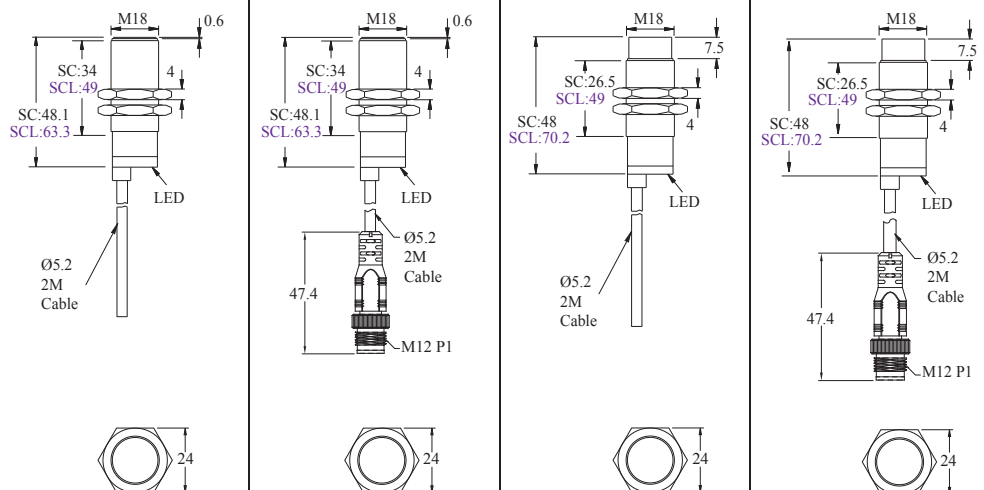
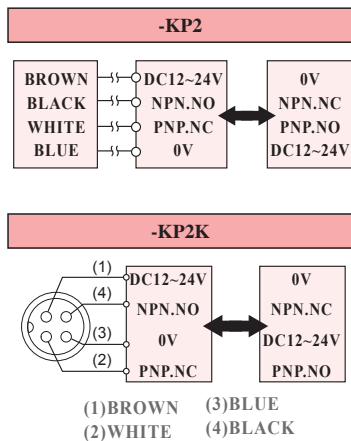


◆ Specifications / 規格表 :

Output method / 輸出模式	NPN N.O.	SC1805-N SCL1805-N	SC1805-NK SCL1805-NK	SC1808-N SCL1808-N	SC1808-NK SCL1808-NK
	PNP N.O.	SC1805-P SCL1805-P	SC1805-PK SCL1805-PK	SC1808-P SCL1808-P	SC1808-PK SCL1808-PK
	NPN N.O./N.C. PNP N.C./N.O.	SC1805-KP2	SC1805-KP2K	SC1808-KP2	SC1808-KP2K
	SCR N.O.	SC1805-A	SC1805-AK	SC1808-A	SC1808-AK
	SCR N.C.	SC1805-A2	SC1805-A2K	SC1808-A2	SC1808-A2K
Sensing distance / 檢出距離	5 mm			8 mm	
Secure sensing distance / 建議距離	0 to 4.0 mm			0 to 6.4 mm	
Standard sensing object / 標準檢測物	Iron 18 x 18 x 1 mm				
Sensing type / 檢出方式	Shielded / 隔離型			Unshielded / 非隔離型	
Description / 外型	Standard M12 / 標準M12				
Hysteresis / 遲滯	≤ 10 % of sensing distance				
Response time / 反應時間	DC Type 2 ms Max. or AC Type 50ms				
Operating voltage / 工作電壓	DC 12 ~ 24V or AC 90 ~ 260V				
Current consumption / 消耗電流	DC : ≤ 8 mA no-load / AC : 2 mA Max.				
Load current / 負載電流	DC : 100 mA Max. at DC 24V or AC : 5 ~ 300 mA Max.				
Leakage current / 漏電流	≤ 1.1 mA no-load				
Residual voltage / 殘餘電壓	≤ DC 1.5V				
Insulation resistance / 隔離阻抗	20M Ω min. (DC500V)				
Voltage withstandability / 絕緣耐壓	AC1000V 60Hz for 60 Sec.				
Operating temperature / 工作溫度	-20°C ~ + 60°C				
Protection degree / 防水等級	IP 66				
Wiring method / 出線方式	N/P : Ø5.2x 2M /3-wires KP2 : Ø5.2x2M /4-wires AC : Ø5.2x2M /-wires	M12 pigtailed type / M12接頭15cm電線式	N/P : Ø5.2x 2M /3-wire KP2 : Ø5.2x2M /4-wires AC : Ø5.2x2M /2-wires	M12 pigtailed type / M12接頭15cm電線式	
Weight / 重量	SC	Approx. 90g	Approx. 30g	Approx. 96g	Approx. 35g
	SCL	Approx. 115g	Approx. 55g	Approx. 116g	Approx. 55g

◆ Dimensions / 尺寸圖 :

◆ Wiring diagrams / 接線圖



Inductive / Capacitive Proximity Sensor

PSD18-LA/LV
PSC18-LA/LV
SC18-LA/LV

HPD
HPS

Ø4
M5
Ø6
M8
M12
M18
M30

JN
JND
KND
PN
PND
RN
SN
TSN

SID
SIR
SIA

PKC
KC
KCM
KCP

M18

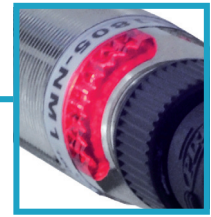
Tubular Inductive Proximity Sensor

◆ Characteristic / 特點 :

- Large LED indicator, clearly checking working operation.
/ 專利大面積動作燈，可清晰了解感測器的動作。
- Longer sensing distance.
/ 檢測距離加長，方便使用。
- NP model : NPN+PNP NO/NC 4-in-1 outputs.
/ 新型NP電路：NPN/PNP NO/NC All in one. ◦



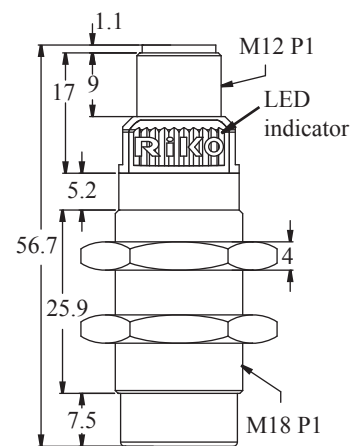
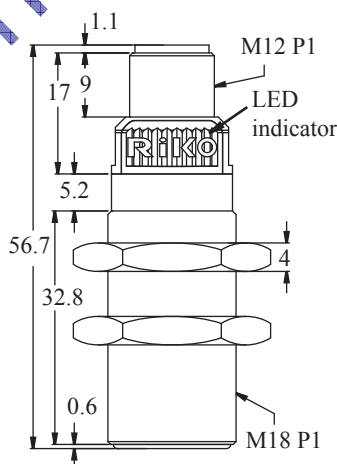
LED Indicator



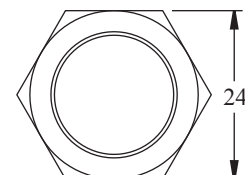
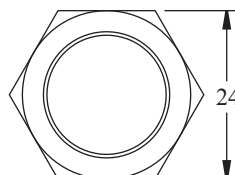
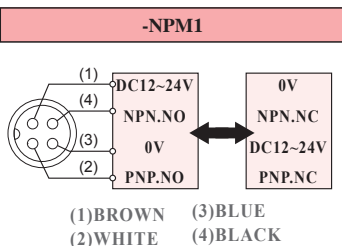
◆ Specifications / 規格表 :

Output method / 輸出模式	NPN N.O.	PSC1805-NM1	PSC1812-NM1
	PNP N.O.	PSC1805-PM1	PSC1812-PM1
	NPN N.O./N.C. PNP N.O./N.C.	PSC1805-NPM1	PSC1812-NPM1
	2 WIRES N.O.	-	-
	2 WIRES N.C.	-	-
Sensing distance / 檢出距離		5 mm	12 mm
Secure sensing distance / 建議距離		0 to 4 mm	0 to 9.6 mm
Standard sensing object / 標準檢測物		Iron 18 × 18 × 1 mm	
Sensing type / 檢出方式		Shielded / 隔離型	Unshielded / 非隔離型
Description / 外型		Standard M18 / 標準M18	
Hysteresis / 遲滯		≤ 10 % of sensing distance	
Response time / 反應時間		2 ms Max.	
Operating voltage / 工作電壓		DC12 ~ 24 V	
Current consumption / 消耗電流		≤ 14 mA no-load	
Load current / 負載電流		100 mA Max. at DC 24V	
Leakage current / 漏電流		≤ 1.1 mA no-load	
Residual voltage / 殘餘電壓		≤ DC 2V	
Insulation resistance / 隔離阻抗		20MΩ min. (DC500V)	
Voltage withstandability / 絕緣耐壓		AC1000V 60Hz for 60 Sec.	
Operating temperature / 工作溫度		-20°C ~ +60°C	
Protection degree / 防水等級		IP 66	
Wiring method / 出線方式		M12 plug-in connector type / M12 接頭	

◆ Dimensions / 尺寸圖 : (unit:mm)



◆ Wiring diagrams / 接線圖 :



Inductive / Capacitive Proximity Sensor

PSD18-LA/LV
PSC18-LA/LV
SC18-LA/LV

HPD
HPS

Ø4
M5
Ø6
M8
M12
M18
M30

JN
JND
KND
PN
PND
RN
SN
TSN

SID
SIR
SIA

PKC
KC
KCM
KCP