

Cylindrical Inductive Proximity Sensors



PR Series (DC 2-wire) CATALOG

For your safety, read and follow the considerations written in the instruction manual, other manuals and Autonics website.

The specifications, dimensions, etc. are subject to change without notice for product improvement. Some models may be discontinued without notice.

Major Features

- Spatter-resistant type
: PTFE coated for high heat resistance (prevent malfunction from welding spatter)
- Operation indicator (red LED)
- IP67 Protection structure (IEC standards)

Ordering Information

This is only for reference, the actual product does not support all combinations. For selecting the specified model, follow the Autonics website.

PR ① ② T ③ - ④ ⑤ ⑥ - ⑦

① Characteristic

No mark: General type
A: Spatter-resistant type

② Connection

No mark: Cable type
W: Cable connector type
CM: Connector type

③ DIA. of sensing side

Number: DIA. of sensing side (unit: mm)

④ Sensing distance

Number: Sensing distance (unit: mm)

⑤ Power supply

D: 12 - 24 VDC=
X: 12 - 24 VDC=
(non-polarity)

⑥ Control output

O: Normally open
C: Normally closed

⑦ Cable

No mark: Standard type
I: Standard type (IEC standards)
V: Oil resistant cable type
IV: Oil resistant cable type (IEC standards)

Sold Separately

- Connector cable, connector connection cable
- Transmission coupler
- Spatter protection cover
- Fixed bracket

Specifications

Installation	Flush type			
General	PR□T08-1.5□	PR□T12-2□	PR□T18-5□	PR□T30-10□
Spatter-resistant	-	PRA□T12-2□	PRA□T18-5□	PRA□T30-10□
DIA. of sensing side	Ø 8 mm	Ø 12 mm	Ø 18 mm	Ø 30 mm
Sensing distance	1.5 mm	2 mm	5 mm	10 mm
Setting distance	0 to 1.05 mm	0 to 1.4 mm	0 to 3.5 mm	0 to 7 mm
Hysteresis	≤ 10 % of sensing distance (DIA. of sensing side Ø 8 mm connector type: ≤ 15 %)			
Standard sensing target: iron	8 × 8 × 1 mm	12 × 12 × 1 mm	18 × 18 × 1 mm	30 × 30 × 1 mm
Response frequency ⁰¹⁾	1.5 kHz	1.5 kHz	500 Hz	400 Hz
Affection by temperature	≤ ± 10 % for sensing distance at ambient temperature 20 °C (DIA. of sensing side Ø 8 mm: ≤ ± 20 %)			
Indicator	Operation indicator (red)			
Approval	CE ENEC	CE ENEC	CE ENEC	CE ENEC

Installation	Non-flush type			
General	PR□T08-2□	PR□T12-4□	PR□T18-8□	PR□T30-15□
DIA. of sensing side	Ø 8 mm	Ø 12 mm	Ø 18 mm	Ø 30 mm
Sensing distance	2 mm	4 mm	8 mm	15 mm
Setting distance	0 to 1.4 mm	0 to 2.8 mm	0 to 5.6 mm	0 to 10.5 mm
Hysteresis	≤ 10 % of sensing distance (DIA. of sensing side Ø 8 mm connector type: ≤ 15 %)			
Standard sensing target: iron	8 × 8 × 1 mm	12 × 12 × 1 mm	25 × 25 × 1 mm	45 × 45 × 1 mm
Response frequency ⁰¹⁾	1.0 kHz	500 Hz	350 Hz	200 Hz
Affection by temperature	≤ ± 10 % for sensing distance at ambient temperature 20 °C (DIA. of sensing side Ø 8 mm: ≤ ± 20 %)			
Indicator	Operation indicator (red)			
Approval	CE ENEC	CE ENEC	CE ENEC	CE ENEC

01) The response frequency is the average value. The standard sensing target is used and the width is set as 2 times of the standard sensing target, 1/2 of the sensing distance for the distance.

Unit weight (package)	Ø 8 mm	Ø 12 mm	Ø 18 mm	Ø 30 mm
Cable	≈ 52 g (≈ 64 g)	≈ 72 g (≈ 84 g)	≈ 110 g (≈ 122 g)	≈ 170 g (≈ 207 g)
Cable connector	≈ 32 g (≈ 44 g)	≈ 42 g (≈ 54 g)	≈ 58 g (≈ 70 g)	≈ 122 g (≈ 134 g)
Connector	≈ 10 g (≈ 32 g)	≈ 26 g (≈ 38 g)	≈ 49 g (≈ 61 g)	≈ 142 g (≈ 154 g) ⁰¹⁾

01) Spatter-resistant type: ≈ 134 g (≈ 146 g)

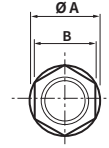
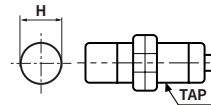
Power supply	12 - 24 VDC≐ (ripple P-P: ≤ 10 %), operating voltage: 10 - 30 VDC≐
Leakage current	≤ 0.6 mA
Control output	2 to 100 mA
Residual voltage	≤ 3.5 V (non-polarity ⁰¹⁾ : ≤ 5 V)
Protection circuit	Surge protection circuit, output short over current protection circuit, reverse polarity protection
Insulation resistance	≥ 50 M.Ω (500 VDC≐ megger)
Dielectric strength	1,500 VAC~ 50 / 60 Hz for 1 min (between all terminals and case)
Vibration	1 mm double amplitude at frequency 10 to 55 Hz (for 1 min) in each X, Y, Z direction for 2 hours
Shock	500 m/s ² (≈ 50 G) in each X, Y, Z direction for 3 times
Ambient temperature	-25 to 70 °C, storage: -30 to 80 °C (no freezing or condensation)
Ambient humidity	35 to 95 %RH, storage: 35 to 95 %RH (no freezing or condensation)
Protection structure	IP67 (IEC standards)
Connection	Cable type / Cable connector type / Connector type model
Cable spec. ⁰²⁾	DIA. of sensing side Ø 8 mm: Ø 3.5 mm, 2-wire DIA. of sensing side Ø 12 mm: Ø 4 mm, 2-wire DIA. of sensing side Ø 18 mm, Ø 30 mm: Ø 5 mm, 2-wire
Wire spec.	Ø 3.5 mm cable : AWG 24 (0.08 mm, 40-core), insulator diameter: Ø 1 mm Ø 4 mm, Ø 5 mm cable : AWG 22 (0.08 mm, 60-core), insulator diameter: Ø 1.25 mm
Connector spec.	M12 connector
Material	Standard type cable (black): polyvinyl chloride (PVC) Oil resistant cable type cable (gray): polyvinyl chloride (oil resistant PVC)
General	Case/Nut: nickel plated brass (DIA. of sensing side Ø 8 mm connector type case: SUS303), washer: nickel plated iron, sensing side: PBT
Spatter-resistant	Case/Nut: PTFE coated brass, washer: PTFE coated iron, sensing side: PTFE

01) Check the condition of connected device.

02) Cable type: 2 m, cable connector type: 300 mm

Cut-out Dimensions

• Unit: mm, For the detailed drawings, follow the Autonics web site.



	Ø 8 mm	Ø 12 mm	Ø 18 mm	Ø 30 mm
Mounting hole (H)	Ø 8.5 ^{+0.5} ₀	Ø 12.5 ^{+0.5} ₀	Ø 18.5 ^{+0.5} ₀	Ø 30.5 ^{+0.5} ₀
TAP	M8×1	M12×1	M18×1	M30×1.5

	Ø 8 mm	Ø 12 mm	Ø 18 mm	Ø 30 mm
Ø A	15	21	29	42
B	13	17	24	35