

# Rectangular Flat-type Inductive Proximity Sensors



## PFI Series (AC 2-wire) PRODUCT MANUAL

For your safety, read and follow the considerations written in the instruction manual, other manuals and Autonics website.

The specifications, dimensions, etc. are subject to change without notice for product improvement. Some models may be discontinued without notice.

### Features

- Flat, compact design (10 mm height) allows easy installation in limited spaces
- Operation indicator (red LED)
- IP67 protection structure (IEC standard)

### Safety Considerations

- Observe all 'Safety Considerations' for safe and proper operation to avoid hazards.
- ⚠ symbol indicates caution due to special circumstances in which hazards may occur.

**⚠ Warning** Failure to follow instructions may result in serious injury or death.

- 01. Fail-safe device must be installed when using the unit with machinery that may cause serious injury or substantial economic loss. (e.g. nuclear power control, medical equipment, ships, vehicles, railways, aircraft, combustion apparatus, safety equipment, crime/disaster prevention devices, etc.)**  
Failure to follow this instruction may result in personal injury, economic loss or fire.
- 02. Do not use the unit in the place where flammable/explosive/corrosive gas, high humidity, direct sunlight, radiant heat, vibration, impact, or salinity may be present.**  
Failure to follow this instruction may result in explosion or fire.
- 03. Do not disassemble or modify the unit.**  
Failure to follow this instruction may result in fire or electric shock.
- 04. Do not connect, repair, or inspect the unit while connected to a power source.**  
Failure to follow this instruction may result in fire or electric shock.
- 05. Check 'Connections' before wiring.**  
Failure to follow this instruction may result in fire or electric shock.

**⚠ Caution** Failure to follow instructions may result in injury or product damage.

- 01. Use the unit within the rated specifications.**  
Failure to follow this instruction may result in fire or product damage.
- 02. Use a dry cloth to clean the unit, and do not use water or organic solvent.**  
Failure to follow this instruction may result in fire or electric shock.
- 03. Do not supply power without load.**  
Failure to follow this instruction may result in fire or product damage.

### Cautions during Use

- Follow instructions in 'Cautions during Use'. Otherwise, it may cause unexpected accidents.
- Wire as short as possible and keep away from high voltage lines or power lines, to prevent surge and inductive noise. Do not use near the equipment which generates strong magnetic force or high frequency noise (transceiver, etc.). In case installing the product near the equipment which generates strong surge (motor, welding machine, etc.), use diode or varistor to remove surge.
- Do not connect capacity load to the output terminal directly.
- This unit may be used in the following environments.
  - Indoors (in the environment condition rated in 'Specifications')
  - Altitude max. 2,000 m
  - Pollution degree 2
  - Installation category II

### Cautions for Installation

- Install the unit correctly with the usage environment, location, and the designated specifications.
- Do NOT impacts with a hard object or excessive bending of the wire lead-out. It may cause damage the water resistance.
- Do NOT pull the  $\varnothing 2.5$  mm cable with a tensile strength of 20 N, the  $\varnothing 4$  mm cable with a tensile strength of 30 N or over and the  $\varnothing 5$  mm cable with a tensile strength of 50 N or over. It may result in fire due to the broken wire.
- When extending wire, use AWG 22 cable or over within 200 m.
- Tighten the installing screws with under 1.47 N m torque.

## Ordering Information

This is only for reference, the actual product does not support all combinations. For selecting the specified model, follow the Autonics website.

PFI ① - ② ③ ④

### ① Sensing side length

Number: A side length(unit: mm)

### ③ Power supply

A: 100 - 240 VAC~

### ② Sensing distance

Number: Standard sensing distance (unit: mm)

### ④ Control output

O: Normally Open  
C: Normally Closed

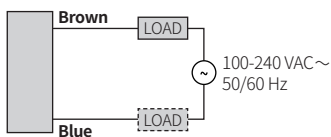
## Product Components

- Product × 1
- Instruction manual × 1
- M3 Bolt × 2

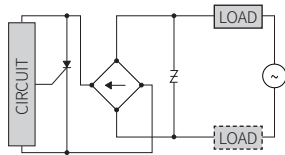
## Connection

- LOAD can be wired to any direction.
- Connect LOAD before supplying the power.

### ■ Cable type



### ■ Inner circuit



## Operation Timing Chart

	Normally open	Normally closed
<b>Sensing target</b>	Presence Nothing	Presence Nothing
<b>Load</b>	Operation Return	Operation Return
<b>Operation indicator (red)</b>	ON OFF	ON OFF

## Specifications

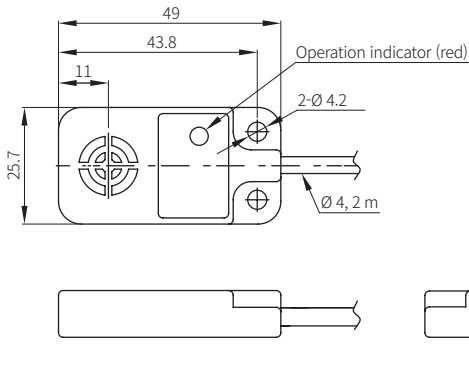
Installation	Upper side type
<b>Model</b>	PFI25-8A□
<b>Sensing side length</b>	25 mm
<b>Sensing distance</b>	8 mm
<b>Setting distance</b>	0 to 5.6 mm
<b>Hysteresis</b>	≤ 10 % of sensing distance
<b>Standard sensing target: iron</b>	25 × 25 × 1 mm
<b>Response frequency<sup>01)</sup></b>	20 Hz
<b>Affection by temperature</b>	≤ ± 10 % for sensing distance at ambient temperature 20 °C
<b>Indicator</b>	Operation indicator (red)
<b>Approval</b>	CE UK ENEC
<b>Unit weight</b>	≈ 70 g

01) The response frequency is the average value. The standard sensing target is used and the width is set as 2 times of the standard sensing target, 1/2 of the sensing distance for the distance.

<b>Power supply</b>	100 - 240 VAC~ 50 / 60 Hz, operating voltage: 85 - 264 VAC~
<b>Leakage current</b>	≤ 2.5 mA
<b>Control output</b>	5 to 150 mA
<b>Residual voltage</b>	≤ 10 V
<b>Protection circuit</b>	Surge protection circuit
<b>Insulation type</b>	≥ 50 MΩ (500 VDC⇒ megger)
<b>Dielectric strength</b>	Between the charging part and the case: 1,500 VAC~ 50/60 Hz for 1 min
<b>Vibration</b>	1 mm double amplitude at frequency 10 to 55 Hz in each X, Y, Z direction for 2 hours
<b>Shock</b>	500 m/s <sup>2</sup> (≈ 50 G) in each X, Y, Z direction for 3 times
<b>Ambient temperature</b>	-25 to 70 °C, storage: -30 to 80 °C (no freezing or condensation)
<b>Ambient humidity</b>	35 to 95 %RH, storage: 35 to 95 %RH (no freezing or condensation)
<b>Protection structure</b>	IP67 (IEC standards)
<b>Connection</b>	Cable type model
<b>Wire spec.</b>	Ø 4 mm, 2-wire, 2 m
<b>Connector spec.</b>	AWG 22 (0.08 mm, 60-core), insulator diameter: Ø 1.25 mm
<b>Material</b>	Case: PPS, standard type cable (black): polyvinyl chloride (PVC)

## Dimensions

• Unit: mm, For the detailed dimensions of the product, follow the Autonics web site.



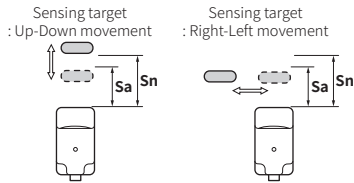
## Setting Distance Formula

Detecting distance can be changed by the shape, size or material of the target.

For stable sensing, install the unit within the 70% of sensing distance.

**Setting distance (Sa)**

= Sensing distance (Sn) × 70%



## Mutual-interference & Influence by Surrounding Metals

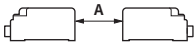
### ■ Mutual-interference

When plural proximity sensors are mounted in a close row, malfunction of sensor may be caused due to mutual interference.

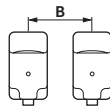
Therefore, be sure to provide a minimum distance between the two sensors, as below table.

<b>A</b>	100 mm	<b>B</b>	80 mm
----------	--------	----------	-------

[Face to Face]



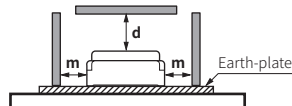
[Parallel]



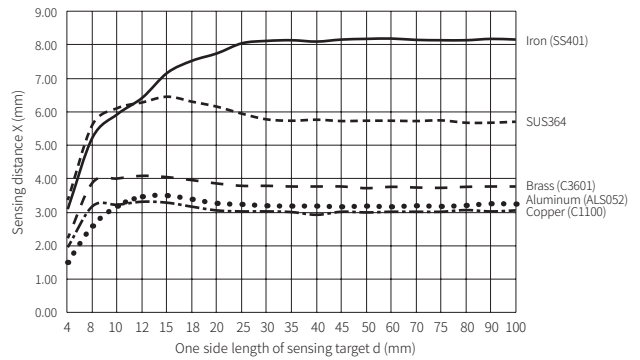
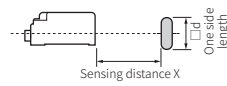
### ■ Influence by surrounding metals

When sensors are mounted on metallic panel, it must be prevented sensors from being affected by any metallic object except target. Therefore, be sure to provide a minimum distance as below chart.

<b>d</b>	15 mm	<b>m</b>	5 mm
----------	-------	----------	------



## Sensing Distance Feature Data by Target Material and Size



## Sensing Distance Feature Data by Parallel (Left/Right) Movement

